

1/2" MINI IMPACT WRENCH 1200NM REF.: 9245



Description:

Compact design for areas with restricted access
Multiple power settings in forward and reverse with one-hand adjustment
Exhaust air is guided downwards through the handle
High performance single hammer striking mechanism
Ergonomically shaped handle and housing for improved handling and operation
Bumper on the housing side protects the air motor

Characteristics:

Output: Square, solid 12.5 mm (1/2 inch)

Maximum loosening torque: 1200Nm

Tightening torque max.: 850 Nm

Recommended torque: 600 Nm

Air requirement: 141.5 l/min

Coupler plug: 1/4" Euro quick coupler

Air connection inlet: 1/4"

Rotations per minute (max.): 10000RPM

Working pressure (bar): 6.3 bar

Sound pressure level: 95.3 dB(A) Lp A

Sound power level: 106.3 db(A) Lp W

Hose diameter (recommended): 10mm

Vibration acceleration: 6.81 m/s²

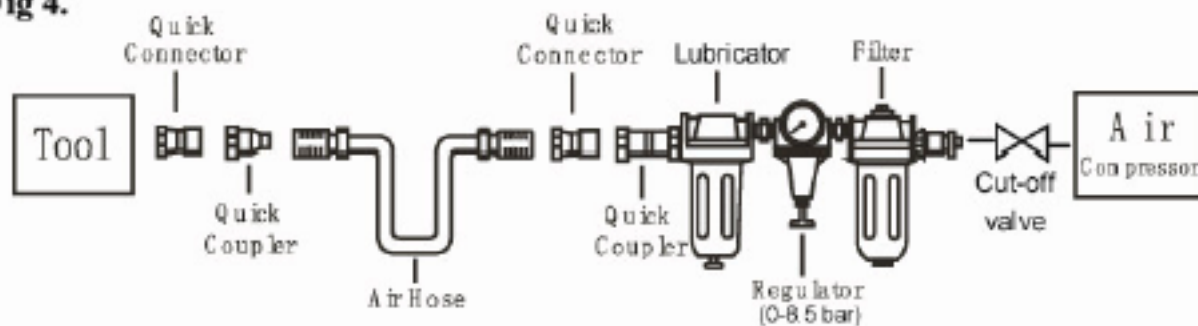
Loosening torque (max) determined with screw size M: 16 M

Important safety rules:

1. Follow all workshop safety rules, regulations, and conditions when using wrench.
2. Do not wear watches, rings bracelets or loose clothing when using air tools.
3. WARNING! Disconnect from air supply before changing accessories or servicing.
4. Maintain the wrench in good condition and replace any damaged or worn parts. Use genuine parts only.
Non-authorized parts may be dangerous.
5. WARNING! Check correct air pressure is maintained and not exceeded. We recommend 90psi.
6. Keep air hose away from heat, oil and sharp edges. Check air hose for wear before each use and ensure that all connections are secure.
7. Only use impact sockets which are specifically designed for use with an impact wrench.
8. Wear approved safety eye/face shield, ear defenders, and hand protection.
9. WARNING! Due to the possible presence of asbestos dust from brake linings, when working around vehicle.
10. brake systems we recommend you wear suitable respiratory protection.
11. Maintain correct balance and footing. Ensure the floor is not slippery and wear non-slip shoes.
12. Keep children and non essential persons away from the working area.
13. DO NOT use the wrench for a task it is not designed to perform.
14. DO NOT use wrench if damaged or thought to be faulty.
15. DO NOT use wrench unless you have been instructed in its use by a qualified person.
16. DO NOT carry the wrench by the air hose at yourself or others.

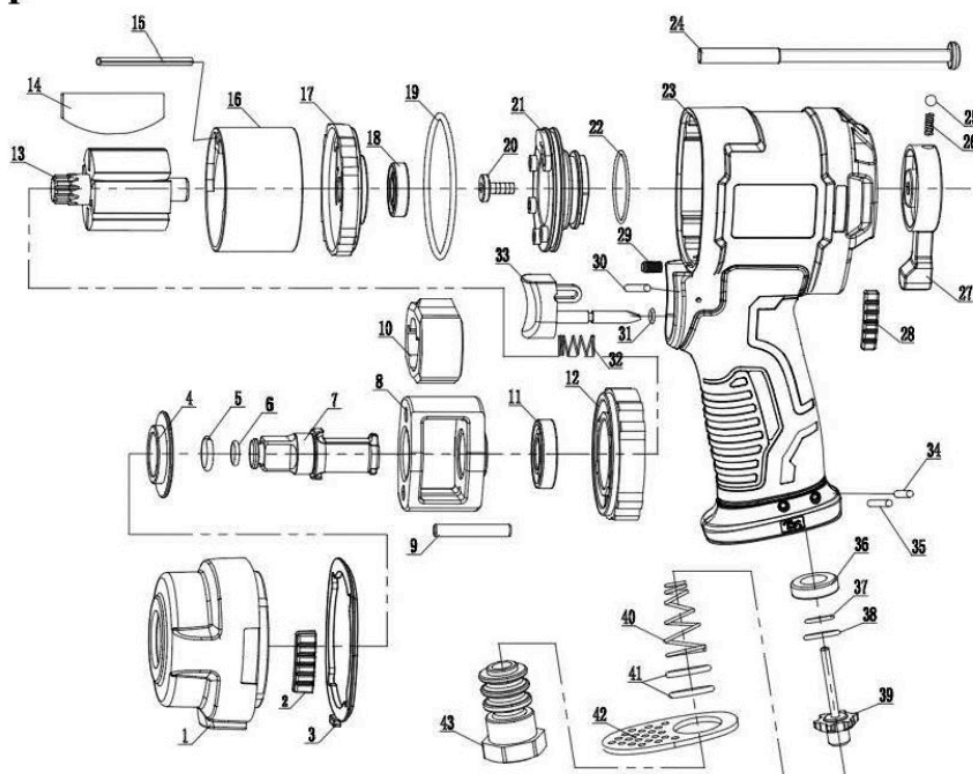
Operation rules:

1. If a filter/regulator/lubricator is not installed on the air system, air operated tools should be lubricated at least once a day or after 2 hours work with 2 to 6 drops of oil, depending on the work environment, directly through the male fitting in the tool housing.
2. If this unit keeps still without running or runs not smoothly, please use of large capacity of special recommended oil or spindle oil to fill in for pneumatic spanner turning. Remove and clean away the dirt and obstacles. If they are unable to be removed after continuous twice or three times, please send them to the dealer for repair or maintenance.

Fig 4.

Expanded view:

Explosive view



Spare part list:

No.	Description	Qty.	No.	Description	Qty.	No.	Description	Qty.	No.	Description	Qty.
1	Housing cover	1	12	Front cover	1	23	Housing	1	34	Pin	1
2	Front pad	2	13	Rotor	1	24	Bolt M5 x72	4	35	Pin	1
3	Front gasket	1	14	Rotor blade	6	25	Steel ball	1	36	Intake valve seat	1
4	Anvil bushing	1	15	Pin 4x46	1	26	Spring	1	37	O-ring	1
5	Anvil bushing	1	16	Cylinder	1	27	Reversing button	1	38	O-ring	1
6	O-ring	1	17	Rear cover	1	28	Back pad	2	39	Intake valve	1
7	Anvil	1	18	Bearing R6	1	29	Bolt M8 x8	1	40	Compressed spring	1
8	Hammer cage	1	19	O-ring	1	30	Pin	1	41	O-ring	2
9	Hammer Pin	2	20	Bolt M5 x 10	1	31	O-ring	1	42	Exhaust cover	1
10	Hammer	2	21	Directional valve	1	32	Spring	1	43	Air inlet	1
11	Bearing R8	1	22	O-ring	1	33	Trigger	1			